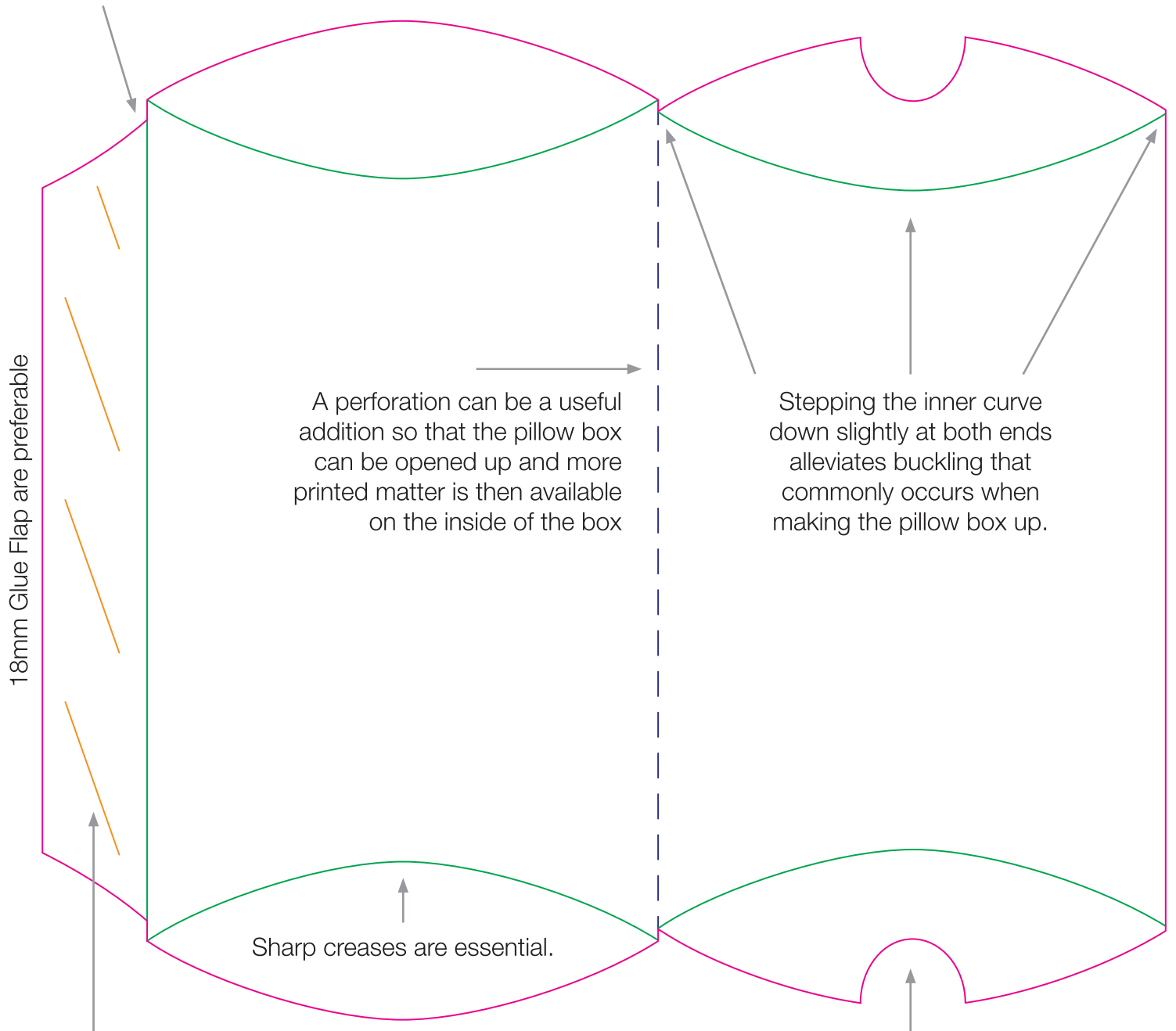




Tips and suggestions when creating a Pillow Pack

Stepping the glue flap away from the edges helps alleviate buckling.

Red lines are Cuts
Green lines are Creases
Blue line is a Perforation



A perforation can be a useful addition so that the pillow box can be opened up and more printed matter is then available on the inside of the box

Stepping the inner curve down slightly at both ends alleviates buckling that commonly occurs when making the pillow box up.

Sharp creases are essential.

Glue Scores are recommended if item is laminated. This creates a break through the laminate and allows some of the glue being applied to reach the paper fibres.

Thumb Cuts go on the inside flap to allow end user to open easily.